



● Thank you for purchasing the our product. Before installing, please read the instruction carefully and keep it for future reference.

⚠ Attention!

- For installation, please follow the steps described in manual. Any damage caused by wrong installation shall be imputed to the users.
- Don't break or modify the wire. To avoid the short circuit, please don't pull the wire when installing.
- The interior examination or maintenance should be executed by our professionals.

⊙ **MARK MEANING:**

NOTE You could get the installation details from the information behind the mark.

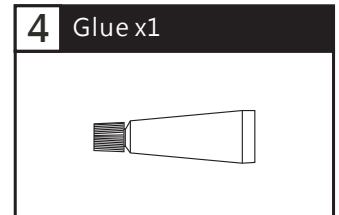
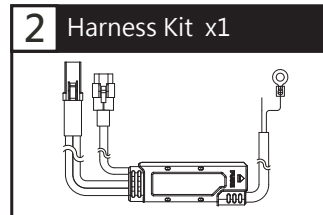
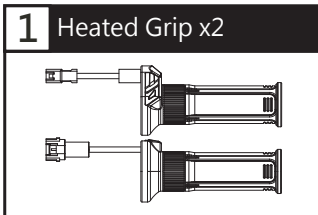
⚠ Some processes must be followed to avoid the affection caused by wrong installation.

⚠ **WARNING!** Some processes must be followed to avoid damages to yourself or the public.

⚠ **CAUTION!** Some processes must be followed to avoid the damage to the vehicle.

📖 **READ CAREFULLY!** If any information dealt with in the manual remains unclear seek professional assistance.

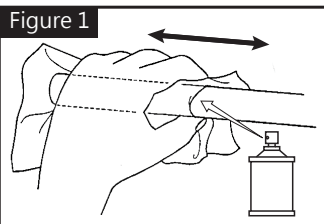
1 Accessories



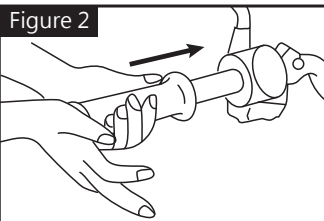
NOTE Contact your local distributor, if the items received in the box are not the same as the items listed above.

2-1 Practical installation instructions

Heated grips installation procedure

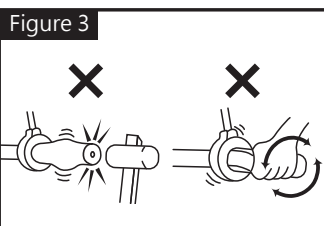


1. Use an appropriate tool to remove the original handlebar grips.
2. Apply a cleaning agent and wipe back and forth to remove the glue residue from the handlebar.

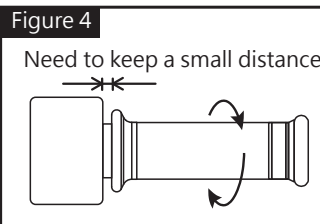


3. Push the heated grip straight onto the handlebar.

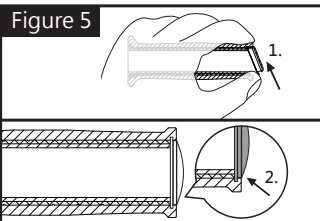
NOTE If the heating grip and the handlebar are loose; then apply the super glue (Accessory 4) to strengthen the hold to ensure that there will be no twisting during riding.



CAUTION! To install, do not use any tool to knock the grip on. Do not twist the grip by hand or with a tool. By doing so, this will break or damage the wire inside the handlebar.

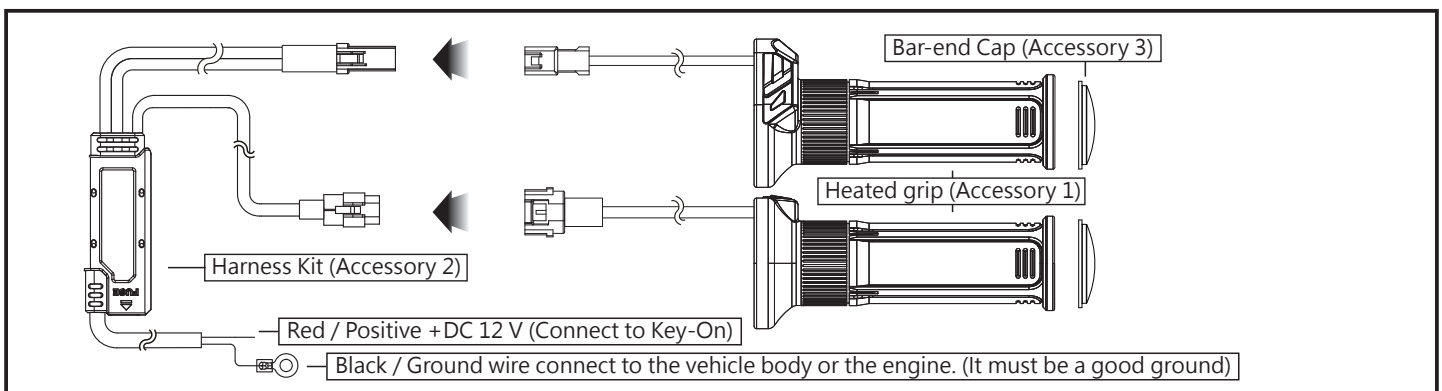


CAUTION! To install the heating grip onto the throttle sleeve, the throttle must maintain a small distance with a surplus distance for wiring; You must test them by rotating back and forth to make sure they can twist.



4. To install the side cap onto the heating grip, insert the top cap into the top groove and then press it downward into the bottom groove.

2-2 Practical installation instructions



3 Heating Function Instruction

● Key-On: White Color Light Up Once
● Short Press: Enter Level 1

NOTE When no button pressed then it's in the turn-off mode which means no heating and no light up.

● Level 1:
Heating Output - 20%
Color of Light - Blue
● Short Press: Enter Level 2

● Level 2:
Heating Output - 40%
Color of Light - Green
● Short Press: Enter Level 3

● Level 3:
Heating Output - 60%
Color of Light - Yellow
● Short Press: Enter Level 4

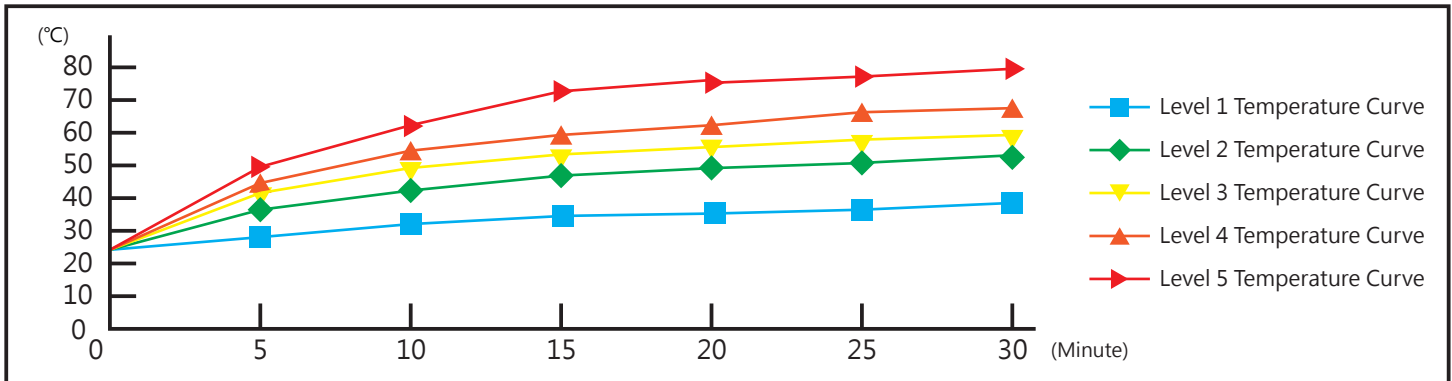
● Level 4:
Heating Output - 80%
Color of Light - Orange
● Short Press: Enter Level 5

● Level 5:
Heating Output - 100%
Color of Light - Red
● Short Press: Turn-Off

NOTE Press and hold the button for 3 seconds could turn-off the heated grips in any level.

NOTE This Heated Grip combine the memorizing function which means no matter the grip was shut down in any level more than 3 seconds and restart, it will restore to the previous level.

4 Heated Grip Testing Data



NOTE The testing environment is under 25 Degrees Celsius, with working voltage of 13.5V.

5 Low Battery Warning Instruction

● Low Battery Warning Activate Condition : When voltage lower than 11.5 V and more than 5 seconds.
● Heating Output : Turn-Off
● Indicator : Purple Light Flashing
● Short Press During Warning : Temporary deactivate the warning.
● Short Press During Turn-Off : Purple light flashing 3 times and turn-off.

NOTE Condition to Restore Normal Status : Detected voltage higher than 13 V and more than 5 seconds.

6 Caution

● Please do not push the rubber part too hard, it might cause the device broken.

● Please do not bend the in-line control unit on the harness kit, it might cause the unit broken.

7 Trouble shooting

The following situation do not indicate malfunction of the meter. Please check the following before taking it in for repair.

Trouble-1	Check item
No LED indicator lighting up.	<ul style="list-style-type: none"> ● Could be the improper connection between the connectors. → Please check each connector about the connection. ● Could be the fuse was burnt. → Please replace the 4A fuse by Terminal Car Fuse.

※If the problem couldn't be solved after above checking, please contact the local dealer or KOSO directly.